



**FRED LONGWORTH**  
HIGH SCHOOL



Belonging, Engaging, Succeeding, Together

## Information for Candidates



# Teacher of Mathematics (Maternity Cover)

**Salary: MPS/UPS**

**Start date: Required for January 2024**

**Duration of Cover: One Year**

**Closing date for Applications: Monday, 30th October 2023**

### POSTAL ADDRESS

Printshop Lane, Tyldesley,  
Manchester, M29 8JN

### CONTACT US

[enquiries@flhs.wigan.sch.uk](mailto:enquiries@flhs.wigan.sch.uk)  
<https://flhs.org.uk>



# About our School

**“There is a calm and orderly atmosphere in lessons and around the school. Pupils reported that staff will deal with any rare incidents of poor behaviour quickly and effectively.”**  
**OFSTED 2022**

## Welcome to Fred Longworth High School

Established in 1964, Fred Longworth High School is a large 11-16, mixed comprehensive school with 1300 students on roll. It is a wonderful school, renowned for its family atmosphere and excellent reputation for innovative teaching and learning. Our reputation locally means that we are always over-subscribed and we pride ourselves on the strength of our relationships with students and parents. The school was graded ‘good’ in its last inspection ([December 2022](#)).

This is an exciting time to be joining our school. In July 2021 the Maths Faculty relocated to brand-new, state of the art facilities in a purpose-built block. This work was the first phase in the complete rebuild of the school. By October 2023, the rebuild will be complete and the new school will open, ensuring that Fred Longworth High School has state-of-the-art facilities for all subjects.



### 2020/21

Demolition of our old Mathematics and Humanities blocks, replaced by a new £3.3 million three floor building.



### 2022/23

Work commences on a brand new building on our school field to replace our existing school. Work is expected to be completed by October 2023.



## Welcome from our Headteacher

Thank you for your interest in this post. To help you decide if the position would suit you, we offer some details and thoughts, which we hope will give you a flavour of our school and the Maths Faculty.

Should you wish to discuss the post before making an application, or would like to arrange a visit to the school, please contact my PA, Mrs D Marland at [marlandd@flhs.wigan.sch.uk](mailto:marlandd@flhs.wigan.sch.uk).

Mr P Davies.

## Contents

About our School.....	2
Our Values.....	4
Working at FLHS .....	5
Mathematics Faculty .....	6
Job Specification .....	8
How to apply.....	9



# Our Values

**‘By working together, we enable everyone to experience success, and fulfil their potential within a caring and effective learning environment’**

## Belonging, Engaging, Succeeding Together (BEST)

At Fred Longworth High School, our aim is for every student to achieve at the very best levels possible. High expectations, together with excellent relationships between staff and students based on mutual respect, lead to an atmosphere in which students enjoy their learning. Our BEST values are at the core of the school's work and ethos.

Our relentless focus on delivering a high-quality curriculum, through expert teaching, ensures that students have the best possible learning experiences in the classroom. Our emphasis on homework also helps them to extend their learning beyond the school day and to develop important independent learning skills.

***“Pupils appreciate the range of help that they receive to support their mental health and well-being. They have positive relationships with each other and their teachers. Pupils are polite and behave well. They work hard in lessons.”***  
**OFSTED 2022**

Our students are encouraged to work hard so that they take full advantage of the excellent learning opportunities open to them. We make sure that they are rewarded for their hard work through praise and also through a comprehensive system of rewards and merits.

Fred Longworth High School also has an excellent reputation for its extra-curricular provision, particularly in the Arts. We actively develop our students as confident and imaginative young people.

We believe in giving our students the best possible experiences of working with professionals within the Arts. The Art, Drama, Music and Dance departments have forged important links with Arts organisations including the Royal Shakespeare Company and the Halle Orchestra. We also commission artists and performers who work across the curriculum to develop students' talents in visual and performing arts.

# Working at FLHS

**Become part of the Freddie's Family.**

We want all staff at Fred Longworth to experience a sense of belonging as a valued member of the Freddie's community.

We want our staff to take pride in their work and feel supported to be able to do their job to the best of their ability. We expect all staff to engage with our Freddie's BEST standards to ensure effective provision in the classroom, across the wider Faculty and ultimately across school.

We are an equal opportunities employer and actively seek applications from candidates of all genders and all backgrounds. We employ around 100 staff, and the majority live within 30-45 minutes of the school.

During the academic year the school closes at 2pm every Monday week B to allow staff to fully engage in professional development opportunities that will enhance the teaching and learning across school. All teaching staff have created their own Action Research Projects which are used to drive the focus of their own professional development.

Weekly Management Board meetings with Heads of Faculty take place in order to provide an opportunity for Heads of Faculty and Senior Leadership Team to discuss key priorities. Heads of Faculty play a key role in the strategic



development of pedagogy.

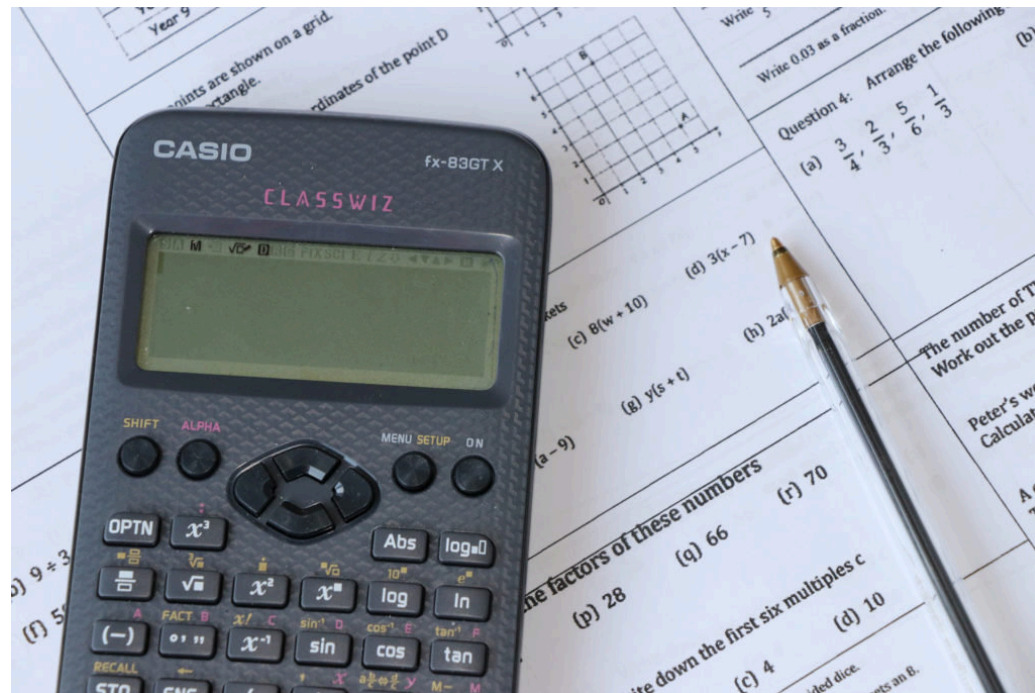
Professional development opportunities include:

- ECT and ITT programmes of training
- Primary transition projects
- Teaching and Learning library/'swap shop' available in the staffroom
- 'Teachers of.....' training and development sessions
- 'Market Place' activities to provide opportunity for sharing good practice
- New staff induction programme

***“Staff are very proud to work at the school. They said that leaders consider their workload and well-being in the decisions that they make. Staff feel very well supported and spoke highly of the training.”***  
**OFSTED 2022**



# Mathematics Faculty



***“Subject leaders have overhauled their curriculums in recent years. They have thought carefully about what pupils need to learn and when they should gain this knowledge.”***  
**OFSTED 2022**

## Our Curriculum Vision

Develop a curriculum that ensures students deepen their understanding and are challenged in their thinking, builds their resilience and gives them opportunities to make links between the different strands of maths and with the outside world.

## Staffing

The Faculty is comprised of 11 full time teachers. A positive and collegiate working culture has been established across both the School and the Faculty meaning that if you come to work here, you can expect to be fully supported and your talents nurtured.

## Facilities

In July 2021 the Maths department moved into a brand-new state of the art £3.3 million block which is part of the wider development of the whole school. In October 2023, the rebuild of the entire school will be completed. Within the Maths faculty are 9 classrooms each of which is

# Mathematics Faculty



equipped with a computer, projector, large whiteboard and speakers. Classrooms are spacious and come equipped with air conditioning facilities. The Maths faculty share an IT suite with the Humanities faculty, which has capacity for 30 students. There is also a faculty office equipped with 5 computers for staff to work at when they have allocated planning time.

## Curriculum and Specifications

GCSE Mathematics (Edexcel)

For a comprehensive listing of our curriculum, please consult our faculty webpage

<https://flhs.org.uk/faculties/mathematics>

***“There is a strong culture of safeguarding throughout the school. Designated safeguarding leaders ensure that staff and trustees receive up-to-date safeguarding training and advice.”***  
**OFSTED 2022**

# Job Specification

## Salary:

MPS/UPS

## Required for:

January 2024

## Closing date for applications:

Monday, 30th October 2023

We wish to appoint a full-time teacher of Maths to join our successful, highly supportive and innovative Maths Department.

The person appointed will be expected to teach Maths across all age and ability ranges.

If you have the talent and the potential to be an outstanding member of the team, we look forward to receiving your application.

## To be successful you will be able to demonstrate:

- Excellent classroom teaching skills.
- A real empathy with students.
- A high degree of organisational ability.
- The ability to command the respect of staff and students.
- The ability to work as a member of a successful and high performing team.
- Good classroom management and control with regard to discipline.
- A willingness to embrace the ethos of our school.

## Specifically you will be:

- Familiar with the requirements and demands of the Maths curriculum at both key stage 3 and 4.
- Able to demonstrate good subject knowledge,

and understanding of the Maths Curriculum and how to teach it effectively.

- Proficient in terms of ICT skills and learning strategies and their role in the delivery of good quality Maths lessons.
- Passionate about teaching students Maths and have an interest in curriculum innovation and development.
- Able to work under pressure and plan the use of time.
- Willing to work closely with the other members of the Faculty in terms of planning.
- Able and committed to deliver GCSE Maths.

## You will have good knowledge and understanding of:

- Assessment procedures in relation to the Maths National Curriculum and at GCSE.
- Matters related to effective monitoring of achievement in Maths.

Our prime requirement is for a teacher who has excellent subject knowledge and who is willing to work hard and help to build on the strengths already within the Faculty.

# How to apply

Please download and complete our Teaching Staff application form available via this link to our website:

<https://flhs.org.uk/vacancies>

You should attach a letter of application (no longer than two sides of A4, Arial, Font size 11), outlining your educational philosophy, how you have prepared yourself for this post, your strengths and interests and what you have to offer. In particular, your views on raising and maintaining levels of achievement would be most welcome.

Completed applications should be submitted to: [recruitment@flhs.wigan.sch.uk](mailto:recruitment@flhs.wigan.sch.uk)

The closing date for applications is Monday, 30th October 2023 and interviews will be held shortly afterwards. We look forward to receiving your application.

The School Board of Trustees is committed to safeguarding and promoting the welfare of children.

## All posts are subject to Enhanced Disclosure Procedures.

# FRED LONGWORTH HIGH SCHOOL



Belonging, Engaging, Succeeding, Together

## POSTAL ADDRESS

Printshop Lane, Tyldesley,  
Manchester, M29 8JN

## CONTACT US

[enquiries@flhs.wigan.sch.uk](mailto:enquiries@flhs.wigan.sch.uk)  
<https://flhs.org.uk>