

Students logging into SMH for the first time.



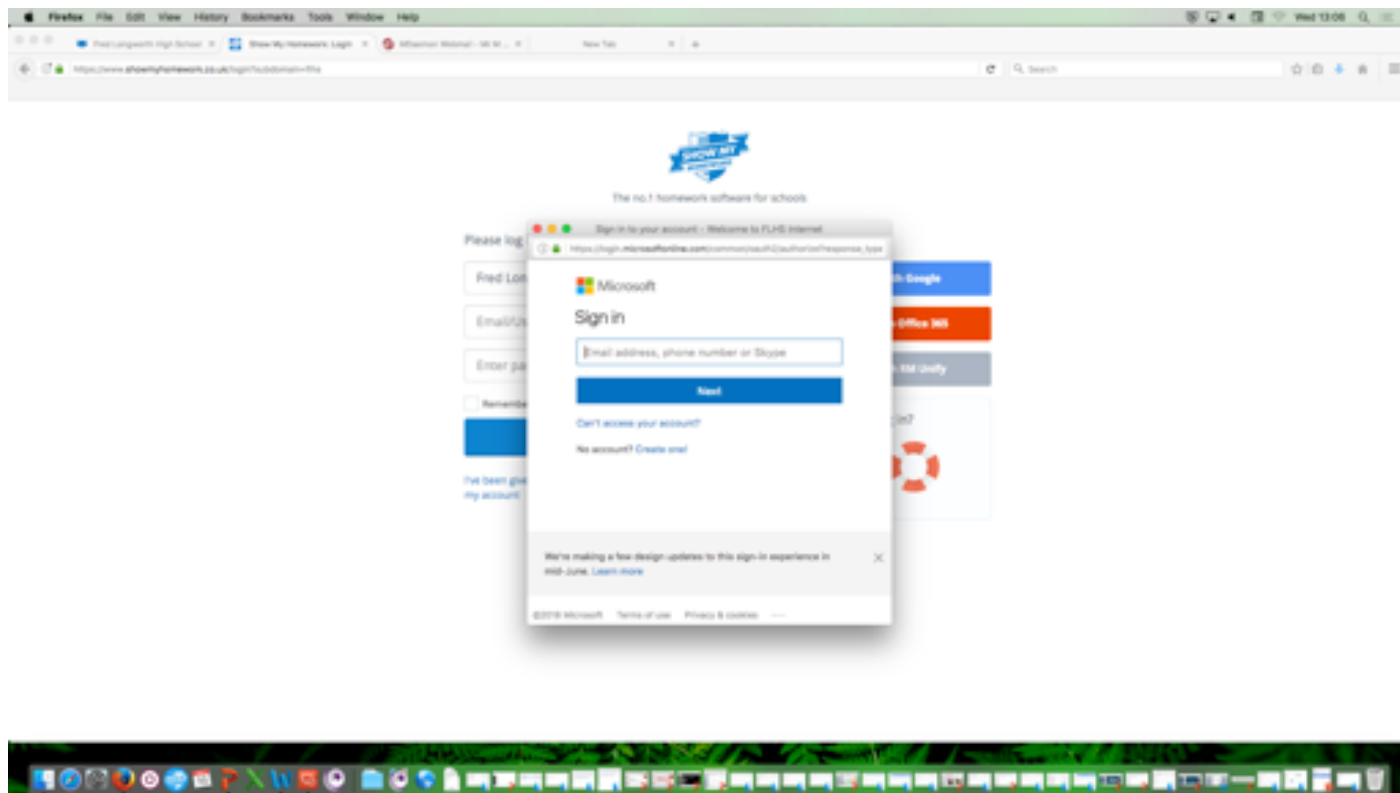
1. Go to www.showmyhomework.co.uk/login



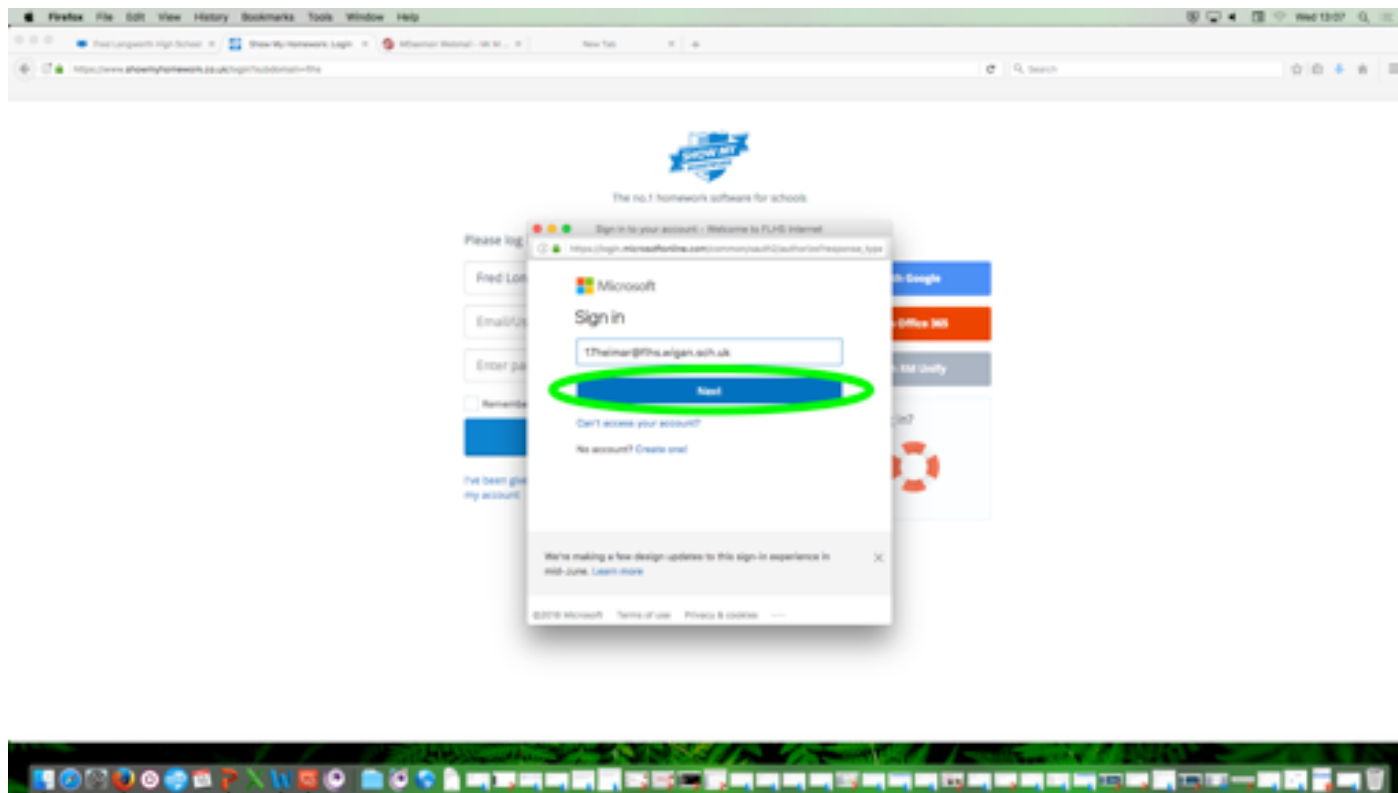
2. Click 'Sign in with Office 365'

The screenshot shows a Firefox browser window displaying the login page for 'The no.1 homework software for schools'. The page is titled 'Please log in' and 'Or sign in below'. The 'Please log in' section includes a dropdown menu for 'Fred Longworth High School', an 'Email/Username' field, an 'Enter password' field, a 'Remember me' checkbox, and a 'Log in' button. The 'Or sign in below' section offers three options: 'Sign in with Google', 'Sign in with Office 365', and 'Sign in with Ed Unity'. The 'Sign in with Office 365' button is circled in green. Below these options is a 'Need help logging in?' section with links for 'I'm a student', 'I'm a parent', and 'I'm a staff member'.

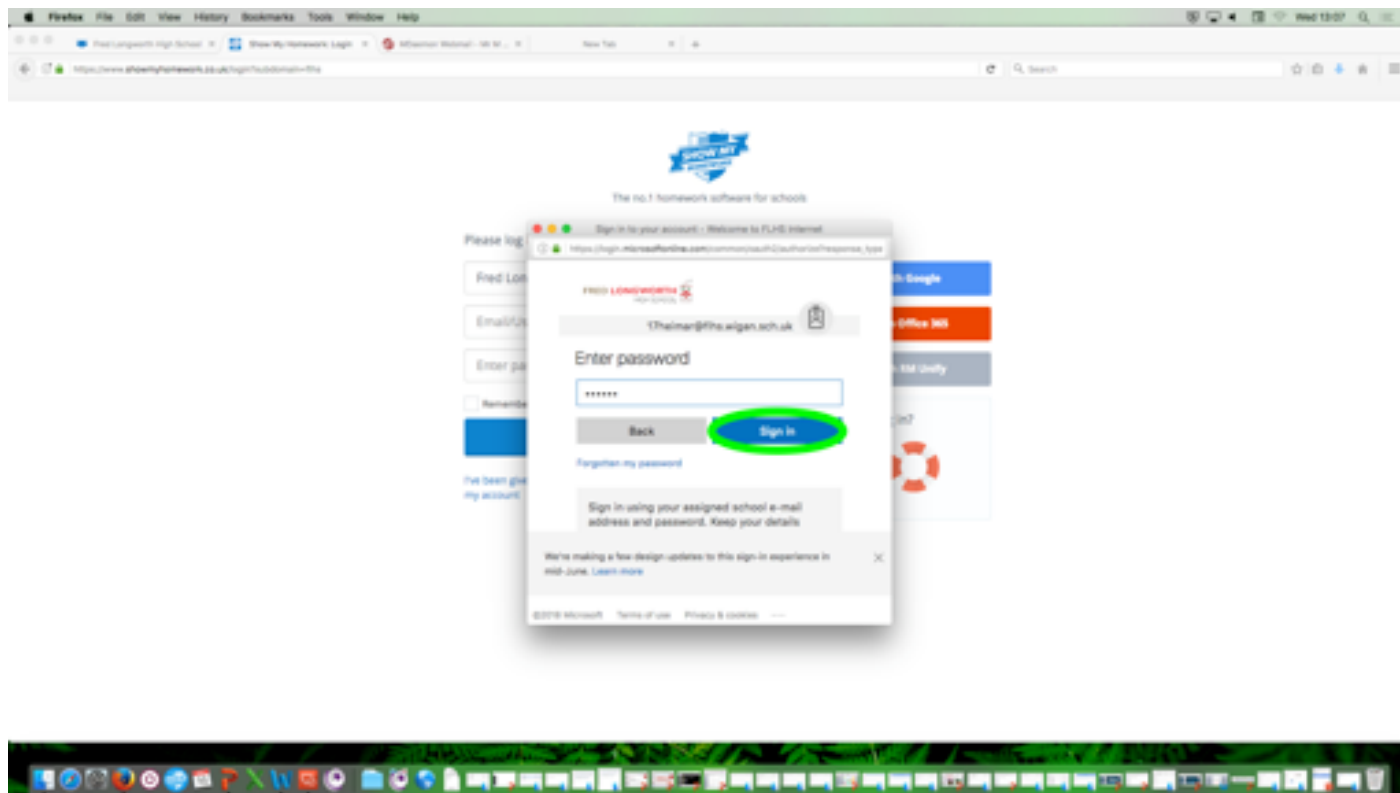
3. Use your school email address (17 _____ @ FLHS.WIGAN.SCH.UK)



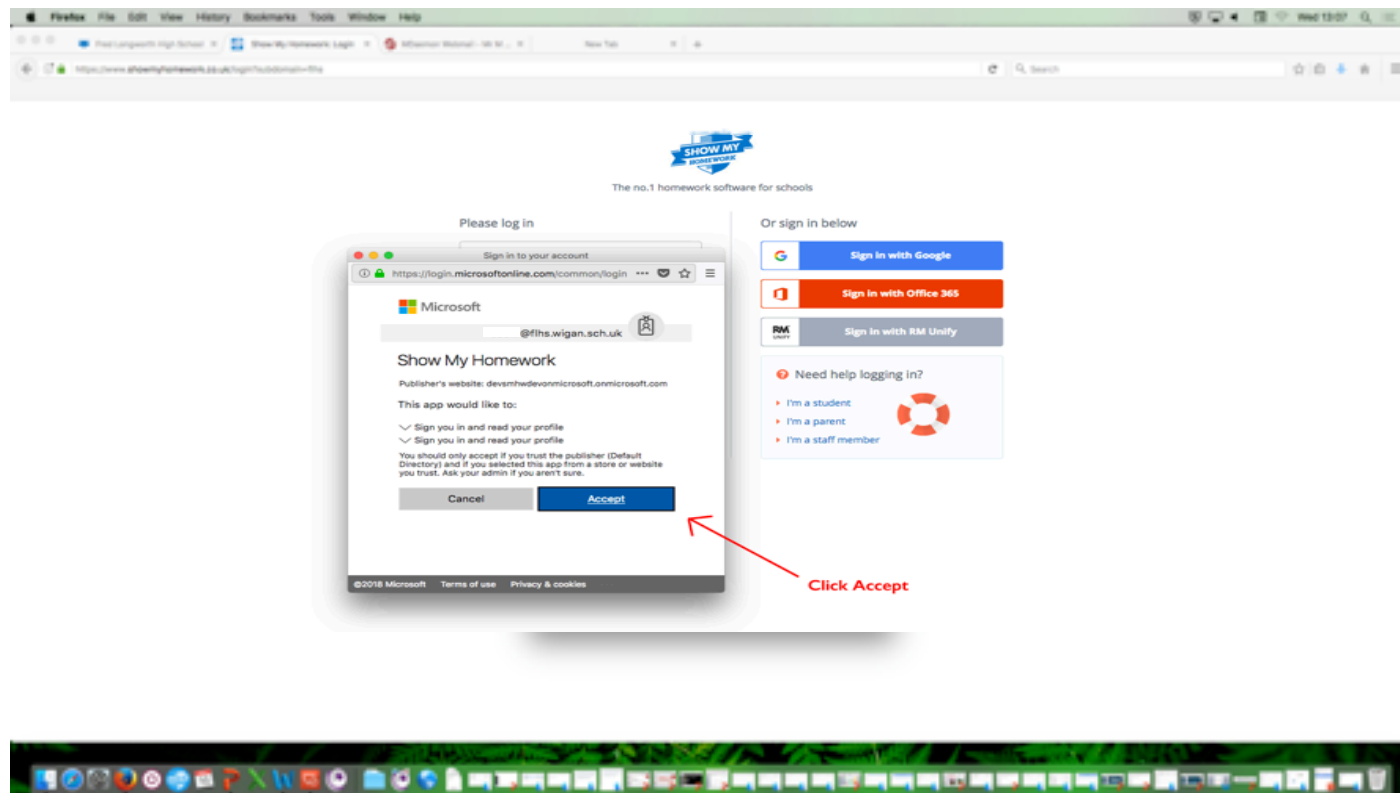
4. Click 'Next'



5. Use your 6 digit password and click 'Sign In'



6. Click 'Accept'



7. Check your Homework

The screenshot shows the 'Show My Homework' website interface. On the left sidebar, the 'Homework calendar' link is highlighted with a green circle. The main content area displays a calendar for May 14th to 20th, 2018. The calendar grid has columns for each day of the week. The 'Wednesday 15th May' column is circled in green and contains an orange event box with the text 'Homework' and 'Please complete by 10.00pm'.

Monday 14th May	Tuesday 15th May	Wednesday 16th May	Thursday 17th May	Friday 18th May	Saturday 19th May	Sunday 20th May
		Homework Please complete by 10.00pm				